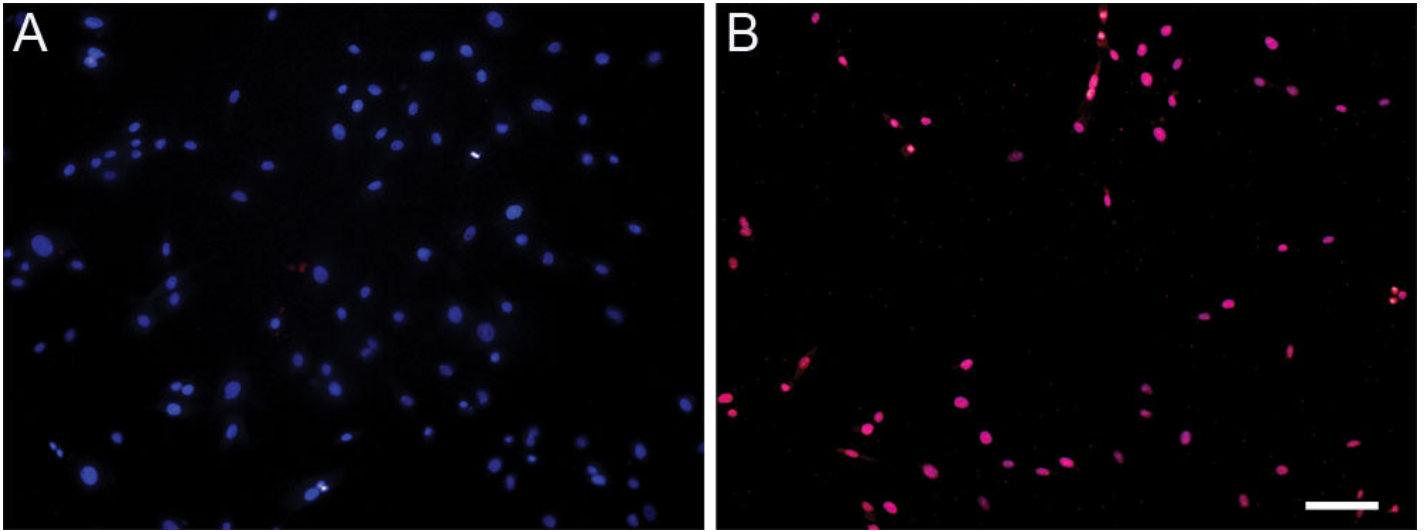


Supplementary Figure 3 : Propidium iodide (PI) staining. To test the viability of MSCs, the cells were incubated with propidium iodide (final concentration 1.5 μM) which identifies dead cells in a population due to the permeability of PI to cells with compromised membranes.



(A) No PI-positive cells were found in the population of MSCs maintained in normal culture conditions.
(B) PI control condition: MSCs incubated with 70% ethanol prior to PI incubation were all positively labeled by the PI staining. Images shown were merged (DAPI + PI). Repetitive experiments were performed on PI staining. (Scale bar=100 μm ; Sample size N=3).